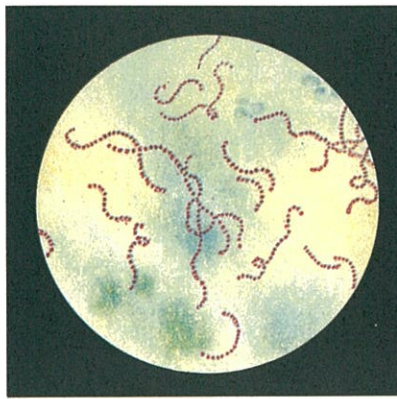
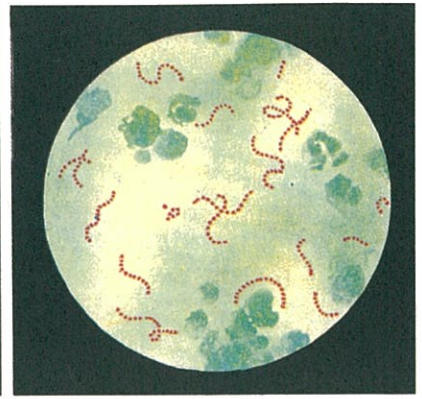


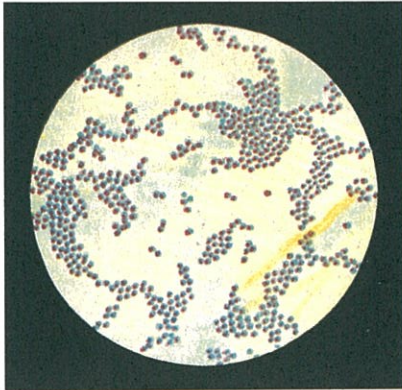
Neisseria gonorrhoeae.
Gram stain.



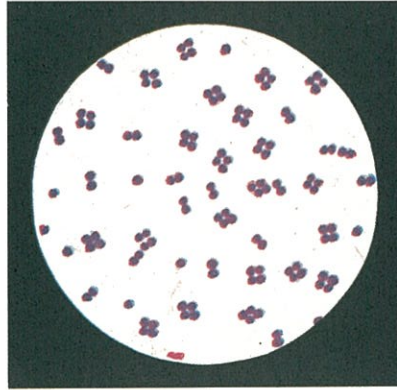
Streptococcus pyogenes
Methylene blue stain.



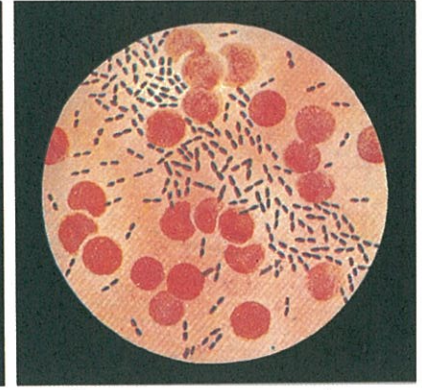
Streptococcus pyogenes.
Pappenheim's stain.



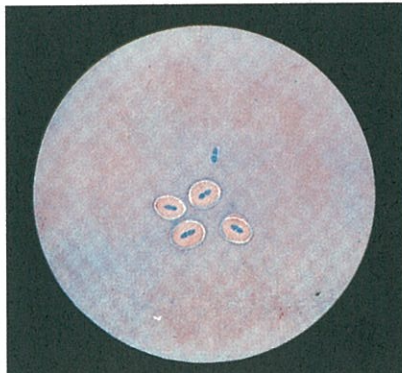
Staphylococcus aureus.
Methylene blue stain.



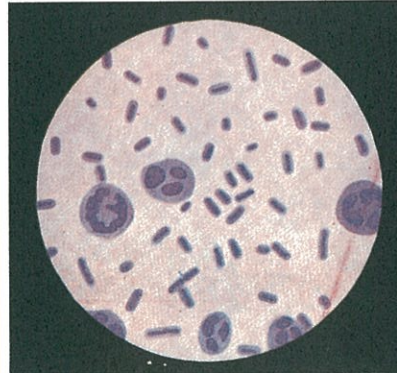
Micrococcus tetragenus
Gram stain.



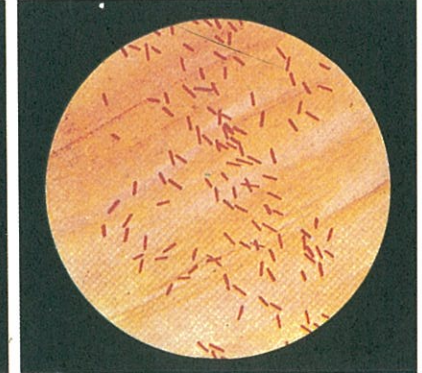
Streptococcus pneumoniae.
Gram stain.



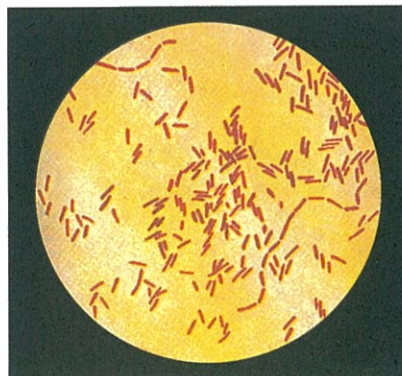
Streptococcus pneumoniae.
Neufeld test.



Klebsiella pneumoniae.
Hiss capsule stain.



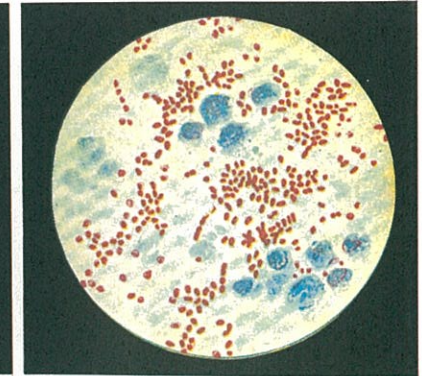
Escherichia coli.
Gram stain.



Salmonella typhi.
Gram stain.



Salmonella typhi.
Flagella staining.



Pasteurella pestis.
Pappenheim's stain.